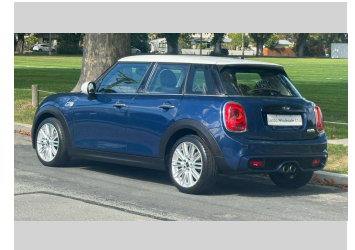
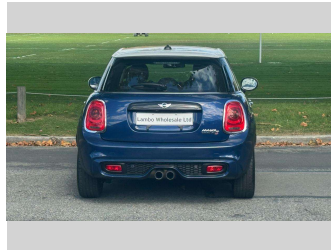
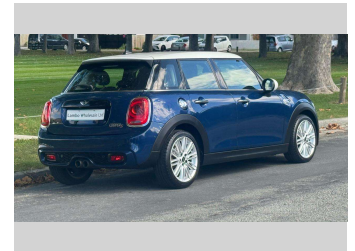
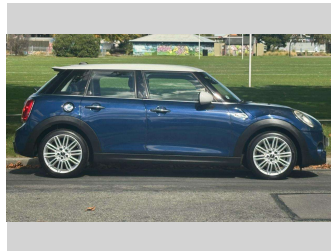



2016 Mini Cooper S 2.0T 6AT 5-Door - Pepper




Purchase Price **\$17,990**
Includes GST, Registration & Licensing

Finance may be available on this vehicle. Ask one of our friendly staff for more information.



Gain peace of mind with Mechanical Breakdown Insurance. **Ask us how.**



Top features
None Listed

Body Style
5 door, Hatchback

Odometer
42,900 km

Engine
2000 cc, Petrol

Fuel Type
Petrol

Transmission
Automatic

Wheels
-

VIN
WMWXS720302E44668

Interior
-

Safety



Based on 2025 VSRR rating

Reg No.

-

Ext Colour
Deep Blue Metallic

History

-

Seats

-

CO2 Emissions
★★★★☆
162 grams/km

Energy Economy
★★★★☆☆


Annual fuel cost of \$2,700
6.9L per 100km

Cost per year is an estimate based on petrol price of \$2.80 per litre and an average distance of 14000 km. Emissions and Energy Economy figures standardised to 3P WLTP.

Stock ID: 2947

Lambo
Wholesale Ltd

Lambo Wholesale | Phone 027 548 4245 | Email lambowholesale@xtra.co.nz
173 Ferry Road, Waltham, Christchurch 8011, New Zealand
www.lambowholesale.co.nz

 **★★★★★**
4.86 | 1060 reviews