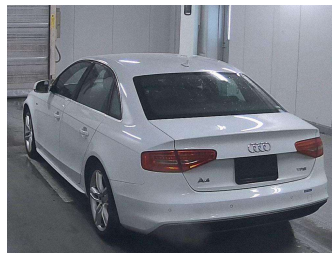


# 2015 Audi A4 Sedan 2.0 TFSi S-Line



Purchase Price

**\$17,990**

Includes GST, Registration & Licensing

Finance may be available on this vehicle. Ask one of our friendly staff for more information.

**marac**

Gain peace of mind with Mechanical Breakdown Insurance. **Ask us how.**

**provident insurance**

## Top features

None Listed

Body Style

**4 door, Sedan**

Odometer

**67,000 km**

Engine

**2000 cc**

Fuel Type

**Petrol**

Transmission

**Automatic**

Wheels

-

VIN

**WAUZZZ8KXFA146025**

Interior

-

Safety



Based on 2024 UCSR rating for 08-15 models

Reg No.

-

Ext Colour

**Glacier White Pearl**

History

-

Seats

-

CO2 Emissions

★★★★☆

**188 grams/km**

Energy Economy

★★☆☆☆☆

**Annual fuel cost of \$3,140  
8L per 100km**

Cost per year is an estimate based on petrol price of \$2.80 per litre and an average distance of 14000 km. Emissions and Energy Economy figures standardised to 3P WLTP.

**Stock ID: 2631**

**Lambo**  
Wholesale Ltd

Lambo Wholesale | Phone 027 548 4245 | Email [lambowholesale@xtra.co.nz](mailto:lambowholesale@xtra.co.nz)  
173 Ferry Road, Waltham, Christchurch 8011, New Zealand  
[www.lambowholesale.co.nz](http://www.lambowholesale.co.nz)



★★★★★  
4.85 | 875 reviews