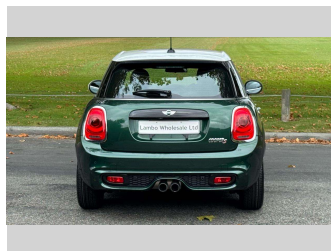
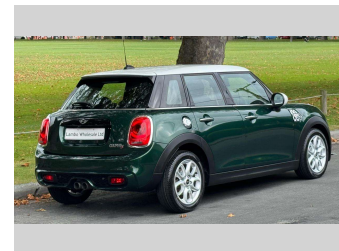
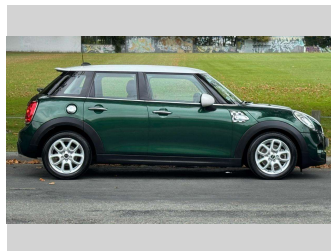


# 2016 Mini Cooper S 2.0T 6AT 5-Door



**Purchase Price** **\$16,990**  
Includes GST, Registration & Licensing

Finance may be available on this vehicle. Ask one of our friendly staff for more information.



Gain peace of mind with Mechanical Breakdown Insurance. **Ask us how.**



**Top features**

None Listed

Body Style  
**5 door, Hatchback**

Odometer  
**43,200 km**

Engine  
**1990 cc, Petrol**

Fuel Type  
**Petrol**

Transmission  
**Automatic**

Wheels  
-

VIN  
**WMWXS720X02C50039**

Interior  
-

Safety



Based on 2025 VSRR rating

Reg No.

-

Ext Colour  
**British Racing Green**

History

-

Seats

-

CO2 Emissions  
**★★★★☆**  
**162 grams/km**

Energy Economy  
**★★★☆☆**

**Annual fuel cost of \$2,700**  
**6.9L per 100km**

Cost per year is an estimate based on petrol price of \$2.80 per litre and an average distance of 14000 km. Emissions and Energy Economy figures standardised to 3P WLTP.

**Stock ID: 2940**



Lambo Wholesale | Phone 027 548 4245 | Email [lambowholesale@xtra.co.nz](mailto:lambowholesale@xtra.co.nz)  
173 Ferry Road, Waltham, Christchurch 8011, New Zealand  
[www.lambowholesale.co.nz](http://www.lambowholesale.co.nz)

