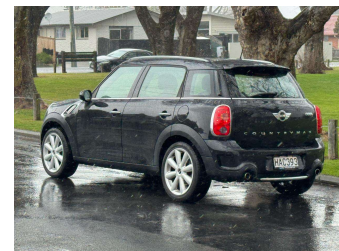
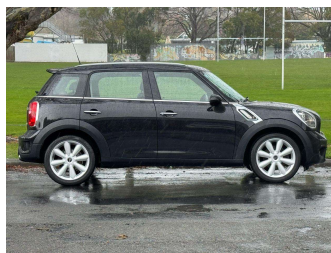
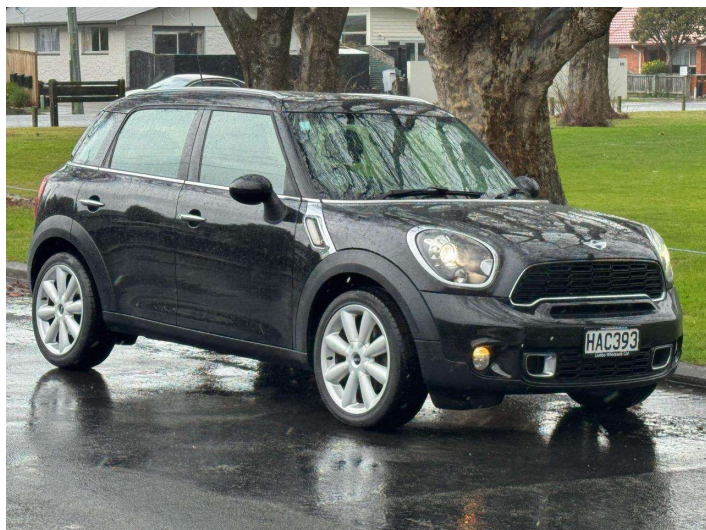


# 2013 Mini Cooper S Countryman SAV 6A 5DR 1.6L



**Purchase Price** **\$11,990**  
Includes GST, Registration & Licensing

Finance may be available on this vehicle. Ask one of our friendly staff for more information.



Gain peace of mind with Mechanical Breakdown Insurance. **Ask us how.**



**Top features**

None Listed

Body Style  
**5 door, Hatchback**

Odometer  
**93,700 km**

Engine  
**1598 cc, Petrol**

Fuel Type  
**Petrol**

Transmission  
**Automatic**

Wheels  
-

VIN  
**WMWZC32030WN04582**

Interior  
-

Safety



Based on 2025 VSRR rating

Reg No.  
**HAC393**

Ext Colour  
**Absolute Black**

History  
**NZ New, 9 owners**

Seats  
**5 seats**

CO2 Emissions  
**★★★★☆**  
**200 grams/km**

Energy Economy  
**★★☆☆☆**

**Annual fuel cost of \$3,250**  
**8.3L per 100km**

Cost per year is an estimate based on petrol price of \$2.80 per litre and an average distance of 14000 km. Emissions and Energy Economy figures standardised to 3P WLTP.

**Stock ID: 3053**



Lambo Wholesale | Phone 027 548 4245 | Email [lambowholesale@xtra.co.nz](mailto:lambowholesale@xtra.co.nz)  
173 Ferry Road, Waltham, Christchurch 8011, New Zealand  
[www.lambowholesale.co.nz](http://www.lambowholesale.co.nz)

